



Recycled Foam Technologies

Under the Surface



HIGHLIGHTS



Asphalt to Green

Engineered Sportfield Solutions, in conjunction with *experts in the field*, has developed the ideal solution to easily convert impervious asphalt or concrete surfaces into synthetic *green* surfaces for athletic playing fields and playgrounds. This Asphalt to Green (A2G) application is growing in popularity around the United States, especially in urban areas where grass play surfaces are scarce and insufficient for demand.

By utilizing our patent pending turf systems with Sport Drain_{MAX}, you can easily convert an asphalt or concrete base into a synthetic turf athletic surface.

These new A2G turf fields can host a greater range of games, including contact and impact sports. A2G can be simply designed for any type of sport including soccer, football, baseball, softball, lacrosse, rugby and field hockey.

SPORT DRAIN MAX INSTALLED AT POMONA COLLEGE IN CLAREMONT CALIFORNIA

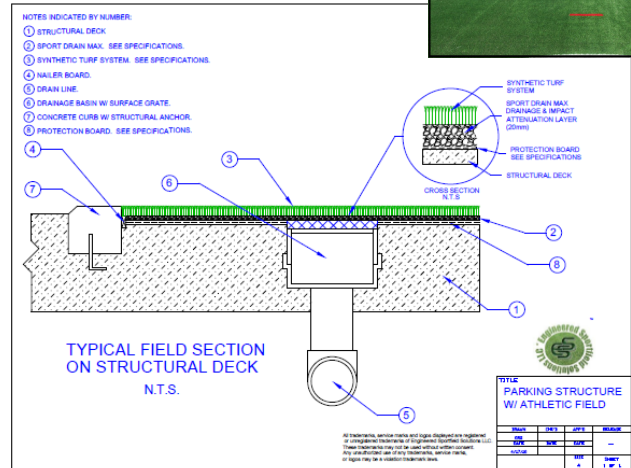
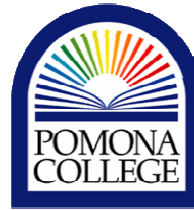
In 2011, Pomona College in Claremont, California completed construction of the new South Campus Parking Facility and Playing field, which includes a lacrosse-size synthetic field on top of a 2-level parking structure. Pomona College presented the unique challenge of designing and constructing a synthetic athletic field on top of the parking garage to both Watry Design & Lloyd Civil & Sports Engineering.

The new structure replaced an old storage facility and solved two pressing problems for the University: 1) A need for additional Parking and 2) Maximizing the space by including the artificial sport field with the Asphalt to Green (A2G) design. The Pomona structure, which implemented the A2G concept, was designed for sustainable construction and includes a variety of green building features.

In keeping with environmental sustainability plan, SportDrain_{MAX}, made from 100% recycled materials, was selected and placed directly over the concrete deck and membrane, eliminating the need for any natural aggregate materials required for drainage. SportDrain_{MAX} was chosen to provide horizontal Drainage and Shock Attenuation in one easily installed layer.

Simply roll SportDrain_{MAX} across the field, then place your synthetic turf and infill system on top. Sport Drain_{MAX}'s lightweight and thin profile allows for minimal slope, while providing superior drainage and consistent, engineered safety directly under your synthetic turf system.

The field is now being enjoyed by both the lacrosse and soccer teams at Pomona College.



ESS' SL-420 REPAIR ADHESIVE AT LOS ANGELES UNIFIED SCHOOL DISTRICT

- Parking Lots
- Parking Decks
- Roof Tops
- Indoor/Outdoor
- Common Areas
- Sport Courts



Engineered Sportfield Solutions and LAUSD partnered to gain approval for the use of ESS' TurfClaw and SL Series Adhesives to be used on LAUSD fields for synthetic turf repairs.

They are packaged in cartridges that use **Mix-On-Demand technology** for easy seam repairs. The two-part urethanes are designed to mix and dispense at the exact ratio to achieve superior bonding with no waste of materials.

The field at Miguel Contreras Learning Complex sustained damage while filming an upcoming movie. The SL-420 adhesive was used to repair this and other seam failures with the help of the Maintenance and Operations division of LAUSD.

The simplicity and ease of the repair adhesive allowed LAUSD to repair the field at a fraction of the cost of traditional repairs.



ESS' repair adhesives are non-toxic and easy to use.

